

Atelier cartes à pince

Addition type $9+\dots/8+\dots$

À l'école de Barbara

$$9 + 4 =$$

13

14

12

$$9 + 2 =$$

10

11

12

$$9 + 5 =$$

13

15

14

$$9 + 6 =$$

15

16

14

$$9 + 7 =$$

15

17

16

$$9 + 8 =$$

16

17

15

$$9 + 9 =$$

18

17

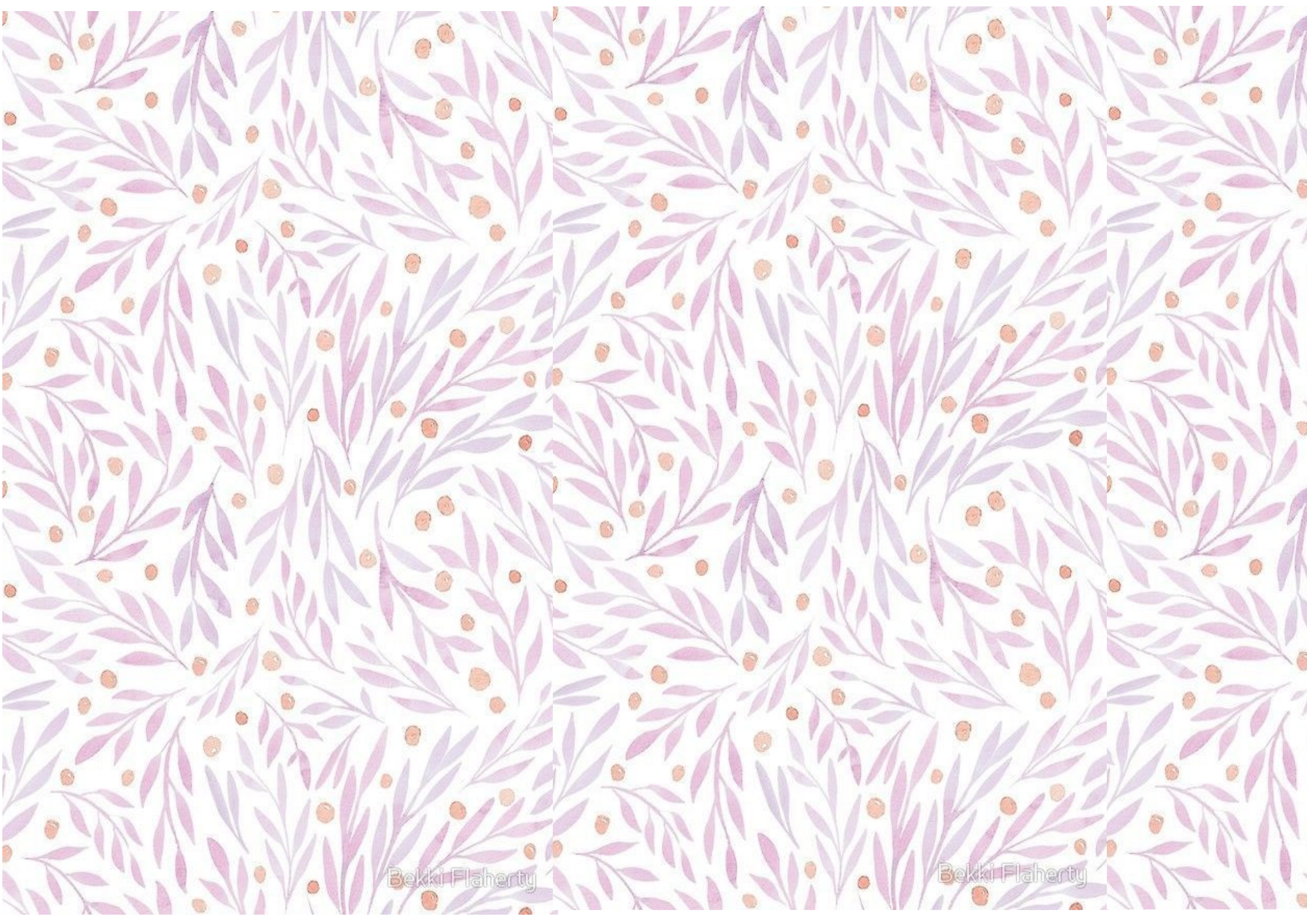
20

$$8 + 8 =$$

16

15

18



Bekki Flaherty

Bekki Flaherty

$$8 + 3 =$$

12

11

9

$$8 + 4 =$$

13

14

12

$$8 + 2 =$$

10

9

12

$$8 + 5 =$$

13

15

14

$$8 + 6 =$$

15

16

14

$$8 + 7 =$$

15

17

16

$$9 + 3 =$$

12

11

10

$$8 + 9 =$$

18

17

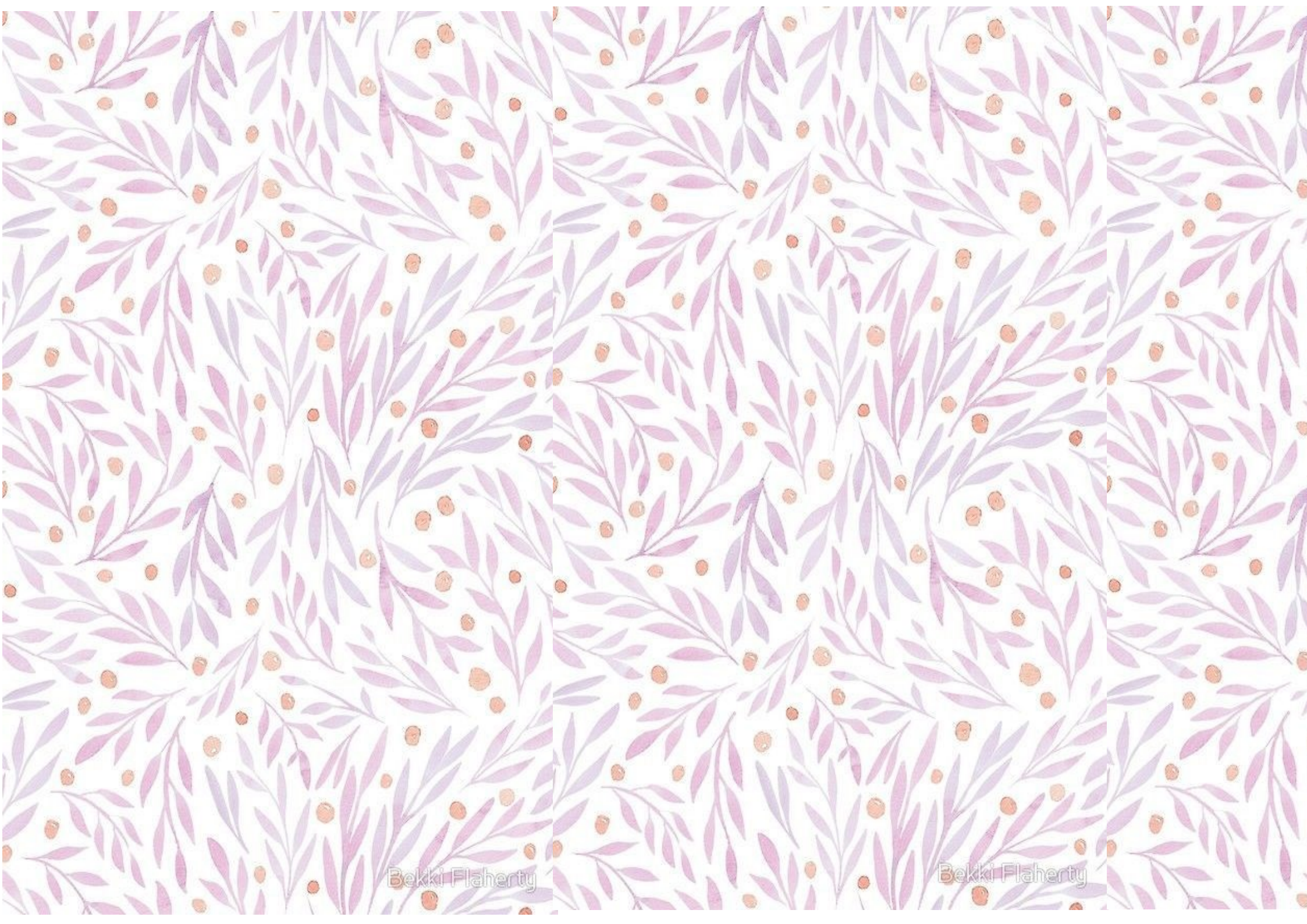
20

$$8 + 10 =$$

16

15

18



Bekki Flaherty

Bekki Flaherty